

1

2

3

4

5

A

B

C

D

A

B

C

D

**Symbol Key**

**Light**

- Altman Phoenix 36 @ 750w 6
- Chauvet ColorBand Pix @ 86w 4
- Chauvet COLORdash Par Hex 7 @ 54w 6
- Chauvet COLORdash Par H7 IP @ 66w 12
- Chauvet SlimPar 66 @ 36w 2
- ETC Source4 36deg @ 575w 13
- ETC Source4WRD 36deg @ 155w 6
- ETC Source4 50deg @ 575w 12
- ETC Source4 Jr Zoom @ 575w 6
- ETC Source4 PAR WFL @ 575w 8
- Martin Atomic 3000 DMX @ 3kw 1

**Moving Light**

- Chauvet Rogue R2 Spot @ 310w 2
- Chauvet Rogue R2 Wash @ 339w 4

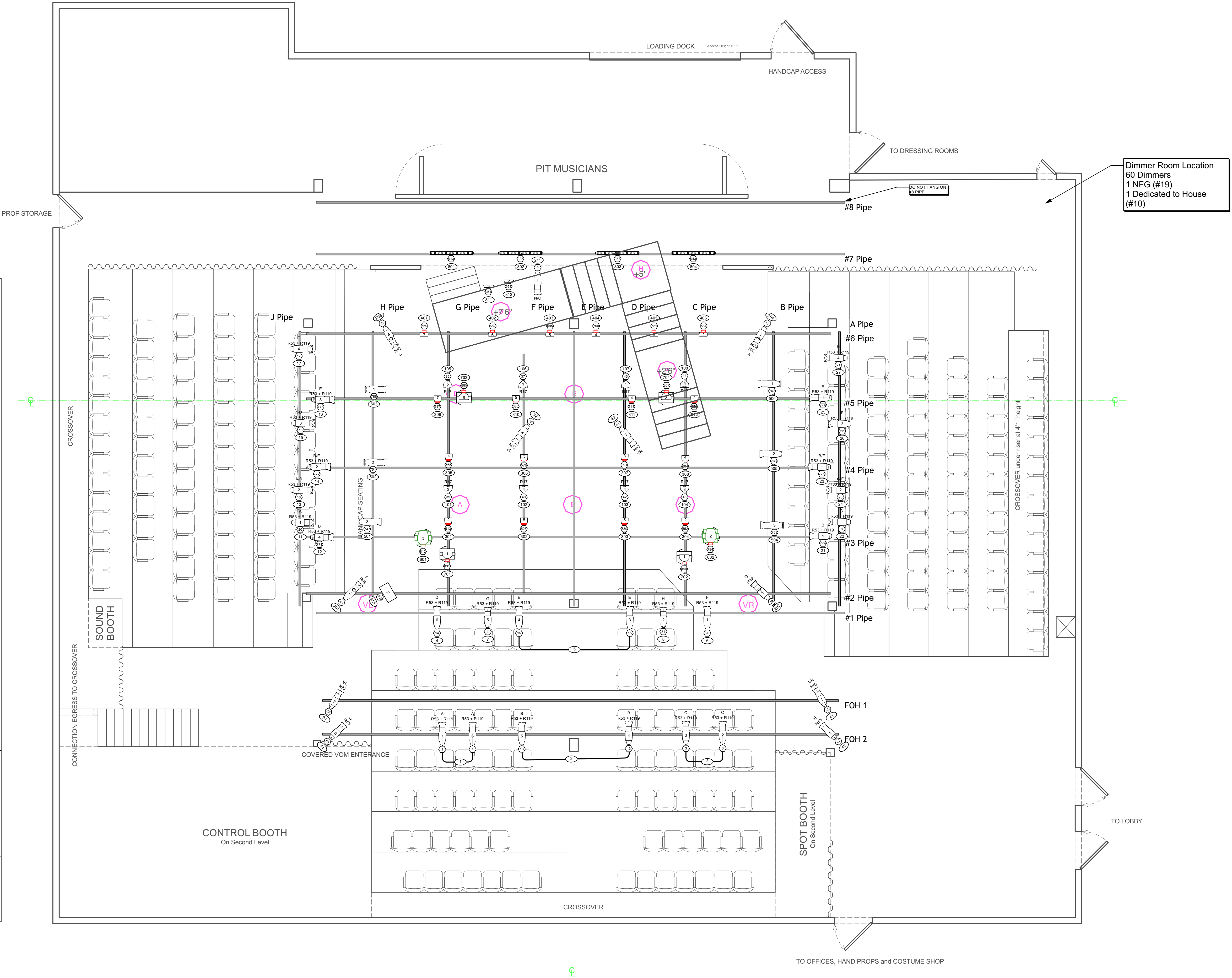
**Typical**

**Color Summary**

Color	Size	Count
N/C	6.25"	7
R17	7.5"	8
R53	6.25"	2
R53 + R119	6.25"	26
R89	6.25"	2

**Accessories**

- SL B Template Holder 4



**Designer/Contact Information:**  
 Caleb Stroman  
 caleb.stroman@gmail.com  
 254-644-5607

**Drawn By:** cws  
**Revision Date:** 06/20/2022

**NOTES:** THE LIGHTING DESIGNER IS SOLELY RESPONSIBLE FOR THE APPEARANCE OF THE PRODUCTION, NOT ITS SAFETY.

THIS DRAWING REPRESENTS VISUAL CONCEPTS AND CONSTRUCTION SUGGESTIONS ONLY. IT DOES NOT REPLACE THE KNOWLEDGE AND ADVICE OF A LICENSED STRUCTURAL ENGINEER. THE DESIGNER IS UNQUALIFIED TO DETERMINE THE STRUCTURAL OR ELECTRICAL APPROPRIATENESS OF THIS DESIGN, AND WILL NOT ASSUME RESPONSIBILITY FOR IMPROPER ENGINEERING, CONSTRUCTION, HANDLING, OR USE. ALL MATERIALS AND CONSTRUCTION MUST COMPLY WITH THE MOST STRINGENT APPLICABLE FEDERAL AND LOCAL FIRE, SAFETY, ENERGY, AND ENVIRONMENTAL CODES.

**MILLBROOK PLAYHOUSE**

**Camelot**

**Director:** Shannon Agnew  
**Producer:** Millbrook Playhouse  
**Purpose:** Light Plot

**Date:** 06/06/2022

**Scale:** 1/4" = 1'

**Sheet:** 1 OF 2

1

2

3

4

5